

Strengthening Collaboration and Coordination through the Implementation of Small Unmanned Aerial Systems (sUAS) in Montgomery County

Poster Showcase
#IAEM22
Non-Competitive Division



- Maryland-NCR Emergency Response System
- Montgomery County Police Department
- Montgomery County Fire and Rescue Service
- Montgomery County Office of Emergency Management and Homeland Security

Stage 1

- **Planning:** Develop policies, plans, CDPs, procedures, MAA, MOU, and regulations.
- **Organizing:** Identify participating agencies and personnel.

Stage 2

- **Equipping:** Identify and procure appropriate vehicles, accessories, supplies, and other needed technology.
- **Training:** Establish training requirements and develop training schedule.

Stage 3

- **Exercising:** Conduct discussion- and operations-based exercises per the Multi-Year Training and Exercise Plan.
- **Evaluating:** Evaluate AARs from real-world deployments, self assessments from certified pilots, and assessments from stakeholder agencies.



August 25, 2016

FEMA

Charingham Redesign, PA, DC
Director
District of Columbia Homeland Security
Emergency Management Agency
2700 M Street, Suite 300, NW
Washington, DC 20002

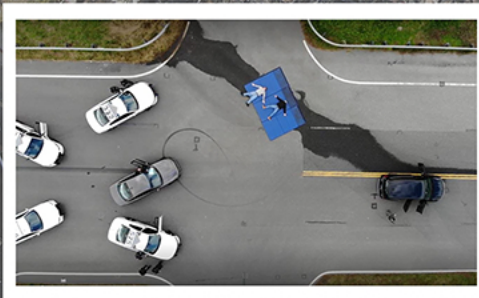
Dear Dr. Redinger:

The Federal Emergency Management Agency (FEMA) Great Program Directorate (GPD) has received your request on behalf of Montgomery County to purchase four (4) Small Unmanned Aircraft Systems (sUAS) for use by the Montgomery County Office of Emergency Management and Homeland Security (OEMHS) using \$48,444 of Fiscal Year (FY) 2016 Structural Security Grant Program (SSGP) - Urban Area Security Initiative (UASI) funding, award number DPCW-16-046-0007. The request meets the requirements detailed in Notice of Funding Opportunity (NOFO) and the Department Grants Manual (DGM) and is approved for the use associated with the terms of the grant award.

APPROXIMATELY 12-15 TREES WERE UPROOTED AND SNAPPED IN AND AROUND THIS CUL DE SAC. SOME OF THESE WERE UPROOTED WITH A DIAMETER OF TWO FEET, FALLING ALONG A WALKING PATH LOCATED BETWEEN THE CUL DE SAC AND QUEEN ELIZABETH DRIVE. THE TREES PRODUCED DAMAGE ON BOTH AUTOMOBILES AND ON THE REAR OF RESIDENCES ALONG QUEEN ELIZABETH DRIVE. DRONE FOOTAGE PROVIDED BY THE MONTGOMERY COUNTY OFFICE OF EMERGENCY MANAGEMENT AND HOMELAND SECURITY CONFIRMED THE LINEAR DAMAGE PATH, ALONG WITH OTHER TREES THAT WERE TOPPED IN THE VICINITY OF THE PATH.



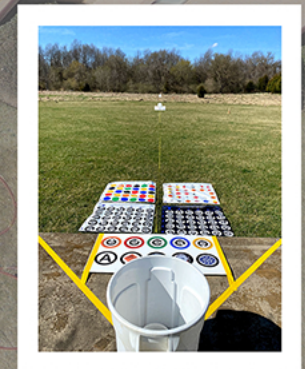
MCPD Training and Testing Facility



MCPD Training



Lyttonville Road Explosion



NIST Training Course