

Poster
Showcase
#IAEM23

Evacuation Planning and Stakeholder Engagement for a Remote Coastal Canadian Indigenous Community

Jonathan Heinz



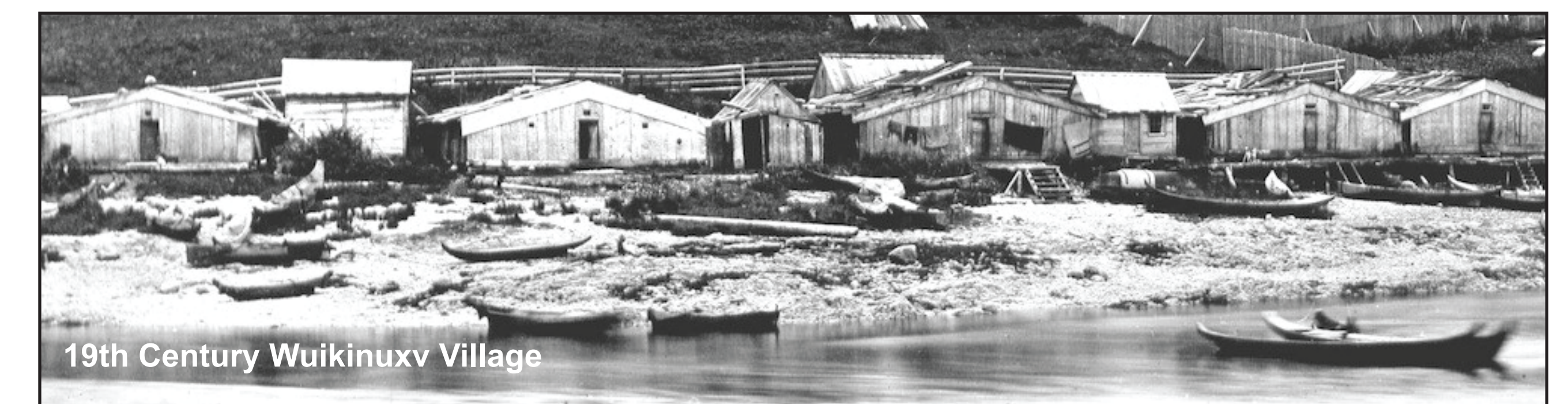
Non-Competitive Division
Graduate Student



Community

The town of Wuikinuxv (part of the Wuikinuxv Nation) is located on the West Coast of British Columbia. The First Nation is situated at the mouth of Rivers Inlet, between two high peaks of the Coastal Mountain Range. The community is bordered to the west by an oceanic inlet and by the large Owekeeno Lake to the east. The low-lying region has been evacuated numerous times in the past, most commonly due to risk of flooding and landslides.

The community only has access and egress via water or air, and no formal agreements or access to the resources required for effective evacuation. In the inevitable event of a local emergency, safe evacuation currently poses a dangerous problem to the community. Consent and ethics requirements through Royal Roads University excluded interviews with Wuikinuxv community members. These restrictions leave this evacuation planning process within the academic domain and does not represent a comprehensive plan presented to the community.



Phase 1
Acquiring and delivering ideas to/from the community (Strategic Level)

Phase 2
Data collection driven by phase 1 ideas

Phase 3
Develop plan for the community with key stakeholders and subject matter experts

Phase 4
Approval and Implementation with community from Core Steering group

Stakeholder and Rights Holder Icons

Expert Group Icons

- Emergency Management British Columbia (EMBC)
- First Nations Health Authority (FNHA)
- First Nations' Emergency Services Society of British Columbia (FNESS)
- Union of BC First Nations Chiefs (UBCIC)
- Indigenous Services Canada (ISC)
- Canadian Coast Guard, Search and Rescue (CCG/SAR)
- Canadian Coast Guard Auxiliary (CCGA)

Steering Group Icons

- Wuikinuxv Hereditary Chief (WHC)
- Wuikinuxv Elected Chief (WEC)
- Wuikinuxv Elders (WE)
- Wuikinuxv Community Leaders (CL)
- Wuikinuxv General Population (WGP)

Other Group Icons

- West Sea Otter Water Taxi (WSOWT)
- CoriAir Float Plane Charters (CA)
- BC Ambulance Service (BCAS)

Evacuation Planning

The small community of Wuikinuxv has ties with stakeholder groups that extend well beyond the bounds of the surrounding inlet. A list of core steering group and subject matter expert groups is included. Each group's influence, interest and relationships are represented visually. Defining the outlines of each group as precisely as possible creates a strong foundation for stakeholder and rights holder engagement and analysis.

After identifying the relevant groups, a visual representation of a 4 phase collaboration between rights holders and stakeholders was developed (Figure 1). Phase 1 highlights the strategic design of the proposed plan, phase 2 involves data gathering to develop a strategy, phase 3 involves drafting an evacuation plan, and lastly phase 4 delivers this plan to the community for final approval followed by formal education and practical application. The fact that the core stakeholders have clear control over the development process and evolution during each stage is critical for the success and longevity of the evacuation plan.

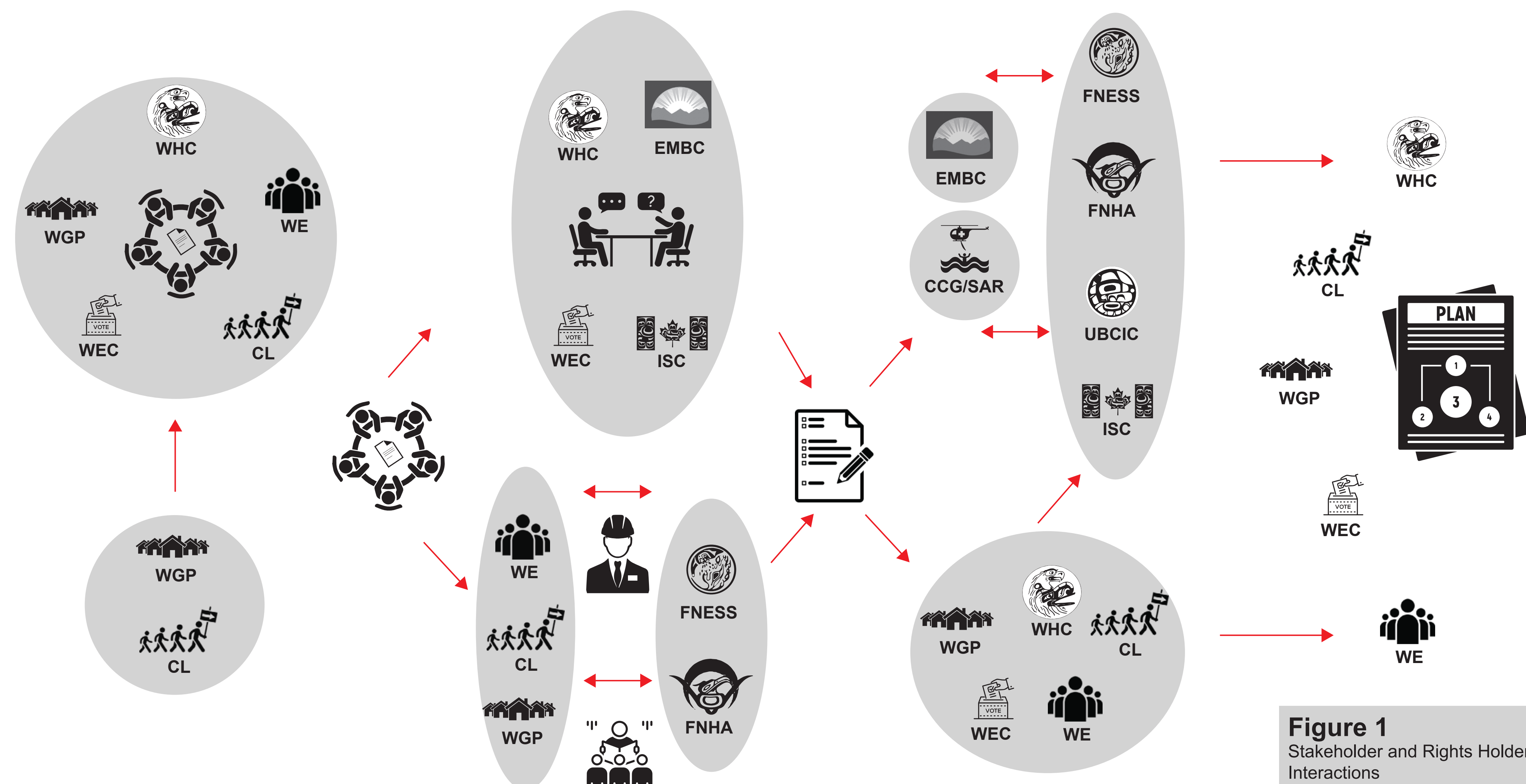


Figure 1
Stakeholder and Rights Holder Interactions