

Global Student Council

Annual Report

2014-15



[Intentionally Left Blank]

LETTER TO THE IAEM GLOBAL BOARD

Matthew Ellis
President - Global Student Council
University of Sydney
Faculty of Science
School of Geoscience
Madsen Bld | Rm 444
Sydney NSW 2000

Dear Global Board

I have pleasure in submitting the 2014 Annual Report of the Global Student Council for presentation to the International Association of Emergency Managers Global Board for the year.

Yours sincerely,

SIGNATURE


Matthew Ellis | President Global Student Council

PRESIDENTS OVERVIEW



This year has been crucial in the continued development of the Global Student Council (GSC). In 2014-15, the GSC developed and implemented an essay contest related to the 2009 L'Aquila, Italy earthquake; livestreaming of keynote speakers at both the 2013 and 2014 IAEM Annual Conferences; and a comprehensive review of GSC By-laws. It is with great appreciation to previous Boards work that we are in a position to move forward.

At the end of the 2013-14 term, the Board already had ideas on how to proceed and the direction they wanted to see the GSC move in. Despite this, the year started off a little less than optimal, as we did not have enough interest at the end of 2013 to run an election for several Board positions. As such we started 2014 with the old Board attempting to organise what looked like a difficult year ahead and attempting to garner enough interest to hold elections. The process of elections did not see the new Board take office until March 2014, putting us several months behind.

The GSC approached 2014 as a 'Foundation Year.' As such, we have placed a concerted effort to improve communications and increase transparency among members and within the Board. This effort has resulted and allowed us to better understand our students, improve and more effectively deliver services to our membership.

TABLE OF CONTENTS

PRESIDENTS OVERVIEW	4
TABLE OF CONTENTS	5
MISSION	6
OVERVIEW	7
Strategic Context.....	8
Overview of the Industry.....	8
Market	9
Students	9
Universities.....	10
Communication	11
Internal Projects	11
External Projects	16
Executive Profiles	18
Region Representative Profiles	21
Support Team Profiles.....	22
Management Report.....	24
Finance Report.....	27
APPENDICES	28
Scholarship Recipients	29
PAST GSC Executives.....	31
PAST GSC Region Representatives	32
GSC Hierarchy.....	33
Online Resources	36
Student Universities.....	37

MISSION

The Global Student Council (GSC) is organized and will be operated for professional and educational purposes to benefit and support International Association of Emergency Members (IAEM) Student Regions and IAEM Student Members by promoting the following:

- a) Support for the vision and mission of the IAEM;
- b) Creating and maintaining successful Student Regions within the IAEM;
- c) Facilitating and coordinating the common interests of the Student Members and Regions;
- d) Advocating the issues that are important to Student Members;
- e) Growth and diversity within the Student Membership and IAEM as a whole; and
- f) Effective and efficient communication and information sharing within the Global SC and with all parts of the IAEM.

OVERVIEW

Established in 1952 as the U.S. Civil Defense Council, in 1985 it changed its name to the National Coordinating Council of Emergency Managers (NCCEM), but it was not until 1997 that we saw the name we all know come to fruition: the International Association of Emergency Managers (IAEM). The IAEM is the preeminent international non-profit organization representing emergency management practitioners working collaboratively to advance the field of emergency management. Comprised of approximately 5,000 total members, the organization is membership-governed with established boards for each of the seven regionally-based councils and an overarching Global Student Council (refer to Appendix for Student Governance Chart).

The IAEM Global Student Council (GSC) was established in 2006 as part of IAEM governance reforms to establish regionally-based councils. Unlike other IAEM councils, the GSC collectively represents all student members and represents the preeminent organization to represent, advocate and support emergency management students globally. Finally, unique to the council is the diversity of student membership both in terms of age and stage within an emergency management career – as some members are purely students and new to the field, some are professionals switching professions, and others are seeking educational upgrading or training to advance existing careers.

Strategic Context

Despite its existence for over half a century, the emergency management profession continues to evolve and expand as the public, private and non-profit sectors increasingly see the utility of mitigation, prevention, preparedness, response and recovery from actual or potential threats to protect people, property, the environment and economy. As part of the evolution of emergency management, noticeable trends include the development of tailored and specific educational programs. These programs are introducing new students to the emergency management field and resulting in current practitioners seek further education to enhance their credentials or switch careers.

Overview of the Industry

Emergency management is a growing industry. The U.S. Department of Labor estimates 20% growth per annum. This has led to an increased demand for higher levels of training and academic studies, driving the industry towards a professional status.

Those employed in the emergency management profession are becoming increasingly aware that they must constantly evaluate their performance and competencies to keep up with changes in technology and customer service. The current political climate involving the war on terrorism, global climate change and concerns of public safety has created a market outside emergency services personnel with business and the general public becoming additional markets.

It is anticipated that the industry will grow as the world's population grows, and as individuals and governments become more aware of their vulnerability. As the trend towards

'professionalisation' increases, so will the demand for resources and emergency management educated personnel.

Market

There is little, comprehensive information regarding the global number and current enrolment of university/college emergency management-specific programs. In December 2013, the Federal Emergency Management Agency (FEMA) compiled a rough list of 275 U.S.-based programs. The US has a long-term goal of having an emergency management program in each of its 50 states. Despite this lack of information, there is a growing importance of emergency disaster management and the role of higher education facilities.

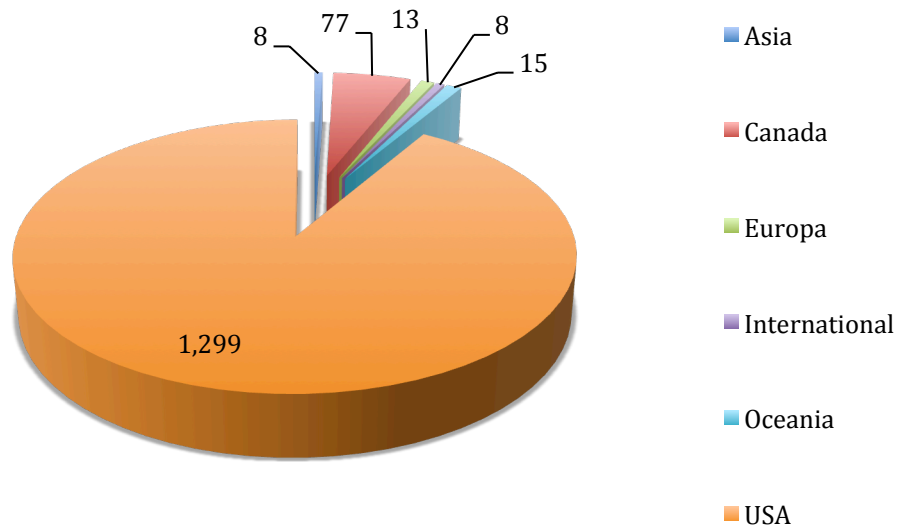
Students

As of Sept. 30th 2014 the GSC had 1,420 student members (see Table 1 and Figure 1 for a breakdown of membership by region). This represents a 15.15% increase over the prior years. While the increase is predominantly due to increases in the USA Region, all regions with the exception of International showed an increase in membership. This slow regional growth was not unexpected as our focus this year has been on developing processes for the GSC and ensuring a solid platform in which to move forward. This short-term sacrifice was deemed important so that we can better gauge our membership in the coming years, in addition to improving performance and transparency.

Table 1: IAEM GSC membership by council

Student region	Number of members		# Change	% Change
	2013	2014		
Asia	7	8	1	+13.33%
Canada	73	77	4	+5.33%
Europa	12	13	1	+8%
International	8	8	0	0%
Oceania	14	15	1	+6.90%
USA	1106	1,299	193	+16.05%
TOTAL	1220	1420	200	+15.15%

Figure 1: Visual of student membership by council



Universities

Currently, FEMA lists 275 emergency management higher education programs across the U.S. while the GSC has students from 267 Universities and Colleges from around the world.

Though focussed specifically on graduate program (masters or

doctoral programs), the [Disaster Sciences Fellowship Program](#) provides the most comprehensive listing of emergency management programs globally.

Communication

The GSC currently uses a number of social media communication platforms to share and engage with membership. These include our Twitter, Facebook and Livestream (during events such as the IAEM Annual Conference) accounts. Key metrics (as of October 22nd, 2014) related to our Twitter and Facebook accounts are presented in Table 2 below.

Table 2: IAEM GSC social media metrics

Facebook	Twitter
Likes: 435	Total Tweets: 144
	Followers: 84

Internal Projects

This section highlights the various projects that the GSC has been involved in over the previous 12 months and identifies GSC programs that have been deemed valuable to the student membership.

IAEM USA Conference- Livestreaming and Podcasts

At the 61st Annual IAEM Conference in Reno, NV in October 2013 the IAEM GSC launched a livestream initiative of four keynote speakers. Each livestream was attended by an average of 50 participants. Additionally, podcasts of select breakout sessions were also conducted.

Livestreaming of keynote session also were conducted at the 62nd Annual IAEM Conference on San Antonio, TX. This has been put forward to the newly formed Digital Engagement Committee

(DEC) and we have negotiated to split the costs. It appears as though this is to become an ongoing initiative. The main goal of this program is to reach our members who cannot make the conference, engage other emergency managers and enable them to see the value in joining IAEM.

Italy Essay Contest

This initiative was released to the student membership in December 2013 on our social media sites. It comprised two sections, Graduate and Undergraduate. A committee will be constructed to read the material and a voting process put in place to decide the winner of the contest. Winners were to receive free registration and hotel in San Antonio as well as an award presented at the conference to highlight themselves, their academic institution and the IAEM website portal where the membership can access their paper. No undergraduate entries were received, while Ms. Heather Beal was the voted the graduate winner.

Regional Development

Currently the GSC has established three regions in alignment with the global regions with one recently established. Currently, the Immediate Past President and Vice President are working on developing Asia and Europa. Oceania is underway but significant work needs to be done to improve the regions. The past 12 months has enabled the region to identify potential limitations in the existing systems and potential programs to expand the reach of IAEM. Furthermore, the 'Chapter-in-a-Box' program has been rewritten and a 'Letter of Introduction' has been developed to assist regions.

Foundation Year

The GSC has come a long way since its inception in 2006. However, it was noted that due to the short timeframe between terms of office (12 months) there were some potential issues that needed to be addressed in order to improve the services to the student membership. The GSC found that a large portion of the time within their positions was spent trying to learn the various systems, protocols and projects that previous boards had started to develop. This inefficiency meant that the student membership was not progressing as well as it could. In response to this, 2014 was deemed the 'Foundation Year.' This meant that the GSC would spend the year reviewing project and protocols, and generally 'cleaning house' to increase efficiency and transparency within the GSC. As part of this initiative five key outputs were identified, including:

- **Business Plan/ Strategic Plan:** To improve understanding of the GSC while providing a report to identify strategic direction of the GSC.
- **Annual report:** Improve communications with the membership and increase transparency by identifying key performance indicators (KPIs) and identifying what was accomplished throughout the year.
- **GSC Terms of Reference:** To provide clear directions on what is expected for reporting and the output of new projects, to reduce ambiguities and increase efficiency of projects
- **Agenda and Meeting Minutes:** To provide direction, improve communication and increase transparency of the GSC on

regular basis. This is available via the Student Resources tab on the IAEM website.

- **The Development of KPIs:** As part of the Annual Report the GSC has identified several KPIs to provide us and our membership with indicators that we are doing our job and that can be measured regularly.
- **Improved Reporting and Accountability Structures:** The various programs identified are designed to provide transparency over GSC operations. While it is expected that there will be some 'teething' issues with these systems, the 'Foundation Year' is designed to start building processes to advance the GSC and increase resources for the various regions and the IAEM membership.

Marketing

The GSC recognised the need to improve its marketing to increase member numbers across regions. In an effort to address this concern a Marketing Coordinator was recruited from the membership to develop a plan to help guide the council in its strategic and tactical marketing requirements.

Outputs

- **Letter of Introduction:** This will enable regions a first step in contacting various groups, schools, universities, research groups and media.
- **Marketing Plan:** Provide an overview of the Marketing direction of the GSC, this can be located within the Business Plan.

By-laws

A review of the By-laws identified some major issues regarding ambiguity, redundancy, contradictory language and poor wording. The services of a solicitor were retained to assist with a review in 2013-14. Proposed revisions were presented at the IAEM Annual Conference in San Antonio with an approval vote by membership scheduled for December 2014. If approved, the by-laws are to take effect January 1, 2016.

Special Projects Committee

The Special Projects Committee was established to assist the GSC complete projects it identified as important to the growth of the membership. As part of this process a Chairperson was identified to manage the sub-committee. Work to date includes development of a Terms of Reference (ToR) and recruitment of committee members. The initial two projects being conducted by the SPC include the development of a Mentorship/ Networking program and the GSC Survey.

Mentorship program

Mentorship has and will continue to be a major interest of student members. While past mentorship activities of the GSC has focussed more on providing tips on networking, we believe these efforts requiring strengthening through the development of a formal process.

GSC Survey:

This survey was designed to assist the GSC meet the needs of the membership and to help the GSC to develop a strategic direction for the GSC in line with both IAEM and the student members. It is to be conducted annually to provide the GSC with a performance indicator.

External Projects

The role of the GSC is to support IAEM; as such there have been numerous occasions where the GSC has been approached to help with activities to enhance IAEM as a whole and where the GSC has provided personnel to assist with various external activities. This section highlights these projects.

Awards Committee Judges

The GSC was approached by the Global Awards Committee to submit some Board members to act as Judges on the award committee, Matthew Ellis, Peter Schalk and Jody Hodge were nominated to assist in this matter.

USA Membership Survey Analysis

The GSC was approached in late 2013 the IAEM Global Board to supply some members to analyse the results of USA Region survey they had conducted on its membership. Matthew Ellis (Oceania) and Eric Gloutnez (CA) were nominated to assist in this matter.

Standardize language

The IAEM Membership Manager approached the GSC, as it appears there are six different descriptions of the Student category of membership in the IAEM-Global and IAEM-USA Bylaws and Administrative Policies and Procedures (APPs), the web site and the membership brochure. Judith Weshinsky-Price is currently working with them to alleviate this issue and remove any ambiguities from documentation.

Digital Engagement Committee (DEC)

The GSC has been working with the newly created DEC to further develop the Livestream and Podcast that was initiated in 2013 for the USA Annual Conference. Agreement has been

reached to split the costs. Results in 2014 indicated interest from other groups in using the Live Stream to reach out to their region.

Executive Profiles



Matthew Ellis | GSC President

Qualifications

- Doctor of Philosophy (TBC - 2015)
- Master in Community Development (Emergency Management)
- Post Graduate Diploma in Management
- Post Graduate Certificate in Understanding the Terrorist Threat
- B.S in Geography (First Class Honors)
- B.S.S. (Emergency Management)
- Adv. Diploma Public Safety (Emergency Management)

University of
Sydney

Faculty of Science |
School of
Geosciences
Madsen Building |
Rm 444

Experience/ background

Matthew Ellis has 20 years of emergency response in both the United States and Australia. Over the past 15 years he has also worked in emergency management in various capacities with local government and various NGOs.

Phone: 60 2 408 627 551

Email: Matthew.Ellis@sydney.edu.au

LinkedIn: au.linkedin.com/pub/matthew-ellis/50/a35/60b/



Mike Kelley, ALEM, SC CEM, MEMS, PCP | GSC Vice- President

Qualifications

- B.A Emergency and Disaster Management

Experience/ background

Michael Kelley has extensive experience in military and emergency management.

American Military
University/American
Public University
System

Email: kg4zre@hotmail.com

LinkedIn: <https://www.linkedin.com/pub/michael-kelley-jr-aem-alem-sc-cem-mems-pcp/16/112/5>



**Lourinda Willey, PhD, CEM, CSHO, SHEP, WSO-CSS/CSSD
| GSC Secretary**

Qualifications

- Doctor of Education (EdD), (TBC- 2015) Organizational Leadership, Emphasis in Organizational Development
- Doctor of Philosophy, Engineering: Safety (2008)
- MA, Journalism Management/Public Relations, Oklahoma University
- Bachelor of Arts, Economics, Oklahoma University
- AAS Environmental and Occupational Safety & Master of Arts Fire and Emergency Management Administration from Oklahoma State University, OK

Grand Canyon
University

Experience/ background

Lourinda Wiley has 20 years of experience in industrial and public safety. She has knowledge of first response in law enforcement and Homeland Response Force ExEvals, plus safety and environmental regulatory compliance in U.S. CFR's, Canadian OHS, USDOT, OSHA, DEQ, City, County, State, and other Federal regulations.

Phone: 405-517-2066
Email: lourinda@willeyllc.com
LinkedIn: www.linkedin.com/in/lourinda
Website: www.willeyllc.com



Judith Weshinskey-Price | GSC Treasurer ENP, RPL

Qualifications

- Doctor of Science, Emergency Management (TBC - 2015), Jacksonville State University, Jacksonville, Alabama
- Master's of Public Administration, Wayland Baptist University, Plainview, Texas
- Bachelor of Interdisciplinary Studies, Emergency Management, University of Wisconsin, Green Bay

Jacksonville State
University

Experience/ background

Judith Weshinskey-Price is an emergency communications center manager working to consolidate three separate emergency dispatch centers into one citywide center. Experience in QA, training, inter-

agency relations, policy creation and revision, and overseeing groups of people in high stress situations.

Phone: 806-206-6415
Email: Judith.Weshinskey-Price@amarillo.gov
LinkedIn: www.linkedin.com/in/weshinskeyprice



Jennifer Duke Holmes | GSC Immediate Past President

Qualification

- Masters, Digital Media (TBC – 2015)
- Bachelor Special Honours, Disaster and Emergency Management York University, Toronto Canada

Experience/ background

Ryerson
University –
Yeates Graduate
School, Toronto
Canada

Jennifer Duke Holmes is a media specialist in the field of Emergency Management with over 16 years experience working with audio/video technology. She has obtained a Specialized Honours degree in Disaster and Emergency Management. She has insight into emergency management methodology that enables her to utilize her very unique perspective through the lens in which the gaps between risk and vulnerability are discovered.

Email: jendukeholmes@gmail.com
LinkedIn: ca.linkedin.com/in/dukeholmes

Region Representative Profiles



Edward O'Neill Ip | Canada Region

Qualifications

- Emergency Management Exercise Design Certificate
- Bachelor of Disaster & Emergency Management (BDEM), York University, Canada

Experience/ background

Justice Institute of British
Columbia

Edward Ip has a Bachelor's degree in Disaster & Emergency Management. He has experience in various fields such as municipal government, NGO, private sector, and healthcare.

Phone: 647-504-9394
Email: ip.edward@live.com
LinkedIn: ca.linkedin.com/in/edwardoneillip



Mike Kelley | USA Region (see above)



Matthew Ellis | Oceania Region (see above)

TBA | Asia Region
TBA | International Region
TBA | Europa Region

Support Team Profiles



Peter Schalk | Special Projects Committee Chair

Qualifications

- Public Sector Emergency Management Certificate, Northern Alberta Institute of Technology, Canada (TBC – 2015)
- Masters of Public Administration, University of Victoria, Canada (TBC – 2014)

Experience/ background

Northern Alberta
Institute of
Technology,
Canada

Peter Schalk currently works for Alberta Human Services providing corporate strategic planning, business continuity and risk management support, specifically for programs and services for persons living with a disability. Peter has a particular interest and specialization in emergency management policy development.

Phone: 778-677-9963
Email: peter.schalk0@gmail.com
LinkedIn: ca.linkedin.com/pub/peter-schalk/4b/106/a64



Brian Nestler | Marketing Coordinator

Qualifications

TBC

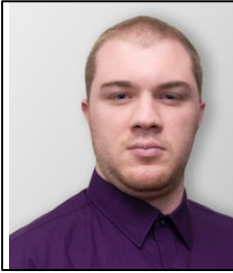
Experience/ background

Harper College

Brian is currently transitioning to a new career in Emergency management from a very successful career in sales and marketing.

Phone: 630-675-4642
Email: brian@nestler.net
LinkedIn: www.linkedin.com/in/briannestler/

Christopher Pound | Social Media Coordinator



Qualifications

- Bachelor degree in Emergency Management (TBC – 2016)
- Nationally Registered Paramedic

Experience/ background

American Military
University (AMU)

Christopher is a full time paramedic in Upstate NY and Western MA. He has been in EMS for 7 years and worked in the volunteer fire service

Phone: 518-925-8782

Email: cpounds217@me.com

LinkedIn: <https://www.linkedin.com/in/cpounds217>

Management Report

The purpose of the various regions and the GSC is to ensure that the student membership (the second largest membership profile in IAEM) is being adequately represented at the global level and on the IAEM Global Board. In order to ensure that the students are properly represented it is important that their representatives attend the monthly meetings. This attendance ensures that any issues can be raised and addressed and that new or ongoing projects are progressing in the appropriate direction and inline with both the Student Membership and the Global IAEM Board.

The GSC holds monthly meeting conducted by teleconference, however, due to previous practices, records may not accurately reflect attendance. It is also important to note that a new board and reporting structure came into place in April and new process have been develop to improve transparency, better reflect attendance, and monitor GSC actions throughout the year.

GSC Monthly meetings attendance

Executive Board

	President	V. Pres.	Secretary	Treasurer	Immediate Past President
November	No information available -----				
December	No information available -----				
January	No information available -----				
February	No information available -----				
March	No information available -----				
April*	Present	Apologies	Present	Present	Apologies
May	Present	Present	Present	Present	Present
June	Present	Apologies	Present	Present	Apologies
July	Present	Present	Present	Present	Present
August	Present	Apologies	Present	Apologies	Present

September	Present	Apologies	Present	Apologies	Present
October	Present	Apologies	Present	Present	Present
November					

*New Board came into effect with new reporting structures; as such there is no information available prior to this date.

Regions

	Asia	Canada	Europa	Intl'	Oceania	USA	SPC
November 2013	No information available-----						
December	No information available-----						
January 2014	No information available-----						
February	No information available-----						
March	No information available-----						
April*	TBD**	Apologies	TBD	TBD	Present	Apologies	Present
May	TBD**	Present	TBD	TBD	Present	Present	Present
June	TBD**	Present	TBD	TBD	Present	Apologies	Present
July	TBD**	Present	TBD	TBD	Present	Present	Present
August	TBD**	Present	TBD	TBD	Present	Apologies	Present
September	TBD**	Present	TBD	TBD	Present	Present	Present
October	TBD**	Present	TBD	TBD	Present	Apologies	Present
November							

**TBD = To be developed

Monthly Updates and Reports

The GSC is responsible for ensuring that each region has a voice in the overall operation of the council and that it works together in the interest of the membership. In ensuring this is done, it is important that the various Board members and Regional Representatives participate in the meetings and understand what is occurring in the various areas. One method of ensuring that the GSC and the membership are kept apprised of the various projects and their progress throughout the year is through regular Board and region reports. This enables the GSC to understand what is happening and provide support.

Executive Board

	President	V. Pres.	Secretary	Treasurer	Immediate Past President
November 2013	No information available -----				
December	No information available -----				
January 2014	No information available -----				
February	No information available -----				
March	No information available -----				
April*	Yes	No	Yes	Yes	No
May	Yes	Yes	Yes	Yes	Yes
June	Yes	No	Yes	Yes	No
July	Yes	Yes	Yes		Yes
August	Yes	Waived	Yes	Yes	Waived
September	Yes	Waived	Yes	Yes	Yes
October	Yes	No	Yes	Yes	No
November					

Regions

	Asia	Canada	Europa	Int'l	Oceania	USA	SPC
November 2013	No information available -----						
December	No information available -----						
January 2014	No information available -----						
February	No information available -----						
March	No information available -----						
April*	TBD**	No	TBD	TBD	Yes	No	Yes
May	TBD**	Yes	TBD	TBD	Yes	Yes	Yes
June	TBD**	Yes	TBD	TBD	Yes	Yes	No
July	TBD**	Yes	TBD	TBD	Yes	Yes	Yes
August	TBD**	No	TBD	TBD	Yes	No	Yes
September	TBD**	No	TBD	TBD	Yes	No	Yes
October	TBD**	No	TBD	TBD	Yes	No	Yes
November	TBD**	Yes	TBD	TBD	Yes	Yes	Yes

Finance Report

The International Association of Emergency Managers (IAEM) is a not-for-profit, voluntary organisation dedicated to raising awareness of emergency management and supporting the professionalization of the field. Divided into seven councils, the Global Student Council (GSC) represents the interests of all student members irrespective of location. This financial report was provided by IAEM for the 2014 – 2015 fiscal year: June 1 – May 31 as a brief snapshot into the GSC finances.

Financial Overview

	Beginning balance	YTD 2014-15	YTD Actual FY 2014
REVENUES			
Global Student Council	29,919.44	3,060.00	32,979.44
Fund Balance & Revenue	29,919.44	3,060.00	32,979.44
EXPENSES			
Global Student Council			
Meeting/Conference Travel		1,866.06	1,866.06
Meeting/Conference Fees			0.00
Supplies			0.00
Stipends			0.00
Membership/Outreach			0.00
Teleconference/Webinar		443.33	443.33
Bank/CC fees		152.98	152.98
Legal Fees		-	0.00
Fiscal Year Expenses		2,462.37	0.00
Ending Balances	29,919.44	597.63	30,517.07

APPENDICES

Scholarship Recipients

Year	Recipient	School	Award
2013 - 2014	Major Jeffry Michael Bird	Royal Roads University	DRII Lacy Suiter Emergency Management Scholarship
	Billy John Kinley, II	Upper Iowa University	IAEM Scholarship
2012 - 2013	Bethanie Brooks	Western Illinois University	EIIP Scholarship
	Marcelyn Cianfarani	Royal Roads University	Command Sergeant Major L. Ken Fisher Emergency Management Scholarship
	Nathan Greene	Adelphi University	DRII Lacy Suiter Emergency Management Scholarship
	Ziqiang Han	University of Delaware	EIIP Scholarship
2011 - 2012	Hsien-Ho (Ray) Chang	University of Delaware	EIIP Scholarship
	Amy LePore Crabill (CEM)	University of Delaware	EIIP Scholarship
	James Menke	North Dakota State University	Command Sergeant Major L. Ken Fisher Emergency Management Scholarship
	Duo Wang	Arkansas Tech University	DRII Lacy Suiter Emergency Management Scholarship
2010 - 2011	Christopher A. Gaylord	California State University, Long Beach	IAEM Scholarship
	Matthew R. Hart	Massachusetts Maritime Academy	DRII Lacy Suiter Emergency Management Scholarship
	Brendan Manning	Loma Linda University	Command Sergeant Major L. Ken Fisher Emergency Management Scholarship
2009 - 2010	Lisa Cockerill	Royal Roads University	IAEM Scholarship
	Pamela Fikes	Jacksonville State University	DRII Lacy Suiter Emergency Management Scholarship
	Lawrence St. George	Long Island University	Command Sergeant Major L. Ken Fisher Emergency Management Scholarship
2008 - 2009	Willam T. Halstead, Jr.	Jacksonville State University	DRII Lacy Suiter Emergency Management Scholarship
	Kevin Misenheimer	The George Washington University	IAEM Scholarship
	Bryan Edwin Sali	Northern Alberta Institute of Technology	Command Sergeant Major L. Ken Fisher Emergency Management Scholarship

	Jeffrey D. Stern, CEM	Virginia Polytech and State University	IAEM Scholarship
2007 - 2008	Tonya Lynn Roberts	Arkansas Tech University	DRII Lacy Suiter Emergency Management Scholarship
	Russell Saffell	Upper Iowa University	IAEM Scholarship
2006 - 2007	Erin Edmundson	Dalhousie University	IAEM Scholarship
	William Colt Hagmaier	Anna Maria College	DRII Lacy Suiter Emergency Management Scholarship
	Terrance Lofgreen	Clover Park Technical College	DRII Lacy Suiter Emergency Management Scholarship
2005 - 2006	Sudha Arlikatti	Texas A&M University	DRII Lacy Suiter Emergency Management Scholarship
	Tammie Fenise Bell	Touro University	DRII Lacy Suiter Emergency Management Scholarship
	Kailash Gupta	North Dakota State University	IAEM Scholarship
	William E. Herskowitz	Millersville University	IAEM Scholarship
	Mark Kozak	University of Akron	DRII Lacy Suiter Emergency Management Scholarship
2004 - 2005	Carol Cwiak	North Dakota State University	IAEM Scholarship
	Tonya Hunter	University of North Texas	DRII Lacy Suiter Emergency Management Scholarship
	Kade Kotheimer	University of Akron	DRII Lacy Suiter Emergency Management Scholarship
	Nicole Vaught	State University of New York at Stony Brook	IAEM Scholarship
2003 - 2004	Wendy Monk	University of North Texas	IAEM Scholarship
	Thomas Poulin	Old Dominion University	DRII Lacy Suiter Emergency Management Scholarship
	Brian Richey	University of North Texas	IAEM Scholarship
2002 - 2003	Timothy "Scott" Eller	University of North Texas	IAEM Scholarship
	Chien-Chih Lin	The George Washington University	IAEM Scholarship
	Joel A. Smith	Arkansas Tech University	IAEM Scholarship
	Jason "Shane" Townsend	Virginia Commonwealth University	DRII Lacy Suiter Emergency Management Scholarship
2001 - 2002	Jamie Moore	University of North Texas	2001 IAEM Durgin Scholarship (Provided through a dedicated donation from Bob Durgin)

PAST GSC Executives

	President	Vice President	Secretary	Treasurer
2014 - 2015	Matthew Ellis	Mike Kelley	Lourinda Willey	Judith Weshinsky-Price
2013 - 2014	Jennifer Duke Holmes	VACANT	Jody Hodge	Peter Schalk
2012 - 2013	Shannan Saunders		Jody Hodge	Eric Sawyer
2011 - 2012	Nancy J. Harris	Shannan Saunders		Eric Sawyer
2010 - 2011	Nancy J. Harris	Amy Stephenson	Andrea Roberts	Matt Feryan
2009 - 2010	Brian Silva	Amy Stephenson		
2008 - 2009	Brian Silva	Daniel Hahn	Andrew Jarvi	Patrick Hardy
2007 - 2008				
2006 - 2007				

If you have any information gaps in the timelines please forward information to the GSC.

PAST GSC Region Representatives

	Canada President	Canada Rep	USA President	Oceania President	Europa (Co-Rep)	Europa (Co-Rep)
2014 - 2015	Eric Gloutnez	Edward Ip.	Jason Block	Matthew Ellis		
2013 - 2014	Marcilyn Cianfarani	Jennifer Duke Holmes	Mike Kelley	Matthew Ellis		
2012 - 2013	Shannan Saunders			VACANT		
2011 - 2012				VACANT		
2010 - 2011	Shannan Saunders	VACANT		Amy Stephenson	Michelle Whitlock	Ralf Beerens
2009 - 2010	Tanya Mullally			Amy Stephenson	Patrick Hardy	
2008 - 2009						
2007 - 2008						
2006 - 2007						

If you have any information gaps in the timelines please forward information to the GSC.

GSC Hierarchy

GSC Board of Directors

Board of Directors = Executive Committee + Regional Presidents (or their nominated representative/s)

The Board of Directors	
Shall act as liaisons between the Global SC and the Student Regions/Student Chapters and Student Members from geographic Councils without a Student Region or Student Chapter.	
<ul style="list-style-type: none"> • Supervise, control, and direct the affairs of the GSC. • Determine the GSC APPs. • Actively pursue the GSC mission 	<ul style="list-style-type: none"> • Set dues and the disbursement of GSC funds. • Adopt rules for the conduct of its business. • Appoint such agents as it considers necessary.

The Board of Directors											
The Executive Committee (Officers)					Region Representatives						
President	Vice President	Secretary	Treasurer	Immediate Past- President	Asia Region	Canada Region	Europa Region	International Region	USA Region	Oceania Region	

The Executive Committee				
President	Vice President	Secretary	Treasurer	Immediate Past-President

Regions

Student Regions are optional sub-divisions of Councils. They are jointly developed and approved by both the geographic Council and the Global SC. The Global SC Board of Directors shall set the

minimum requirements for Student Regions, subject to the approval of a simple majority of the IAEM Board of Directors.

Asia Student Region	To be developed
Canada Student Region	Established
Europa Student Region	To be developed
International Student Region	To be developed
Oceania Student Region	Not currently a sub-division of regional council
USA Student Region	Established

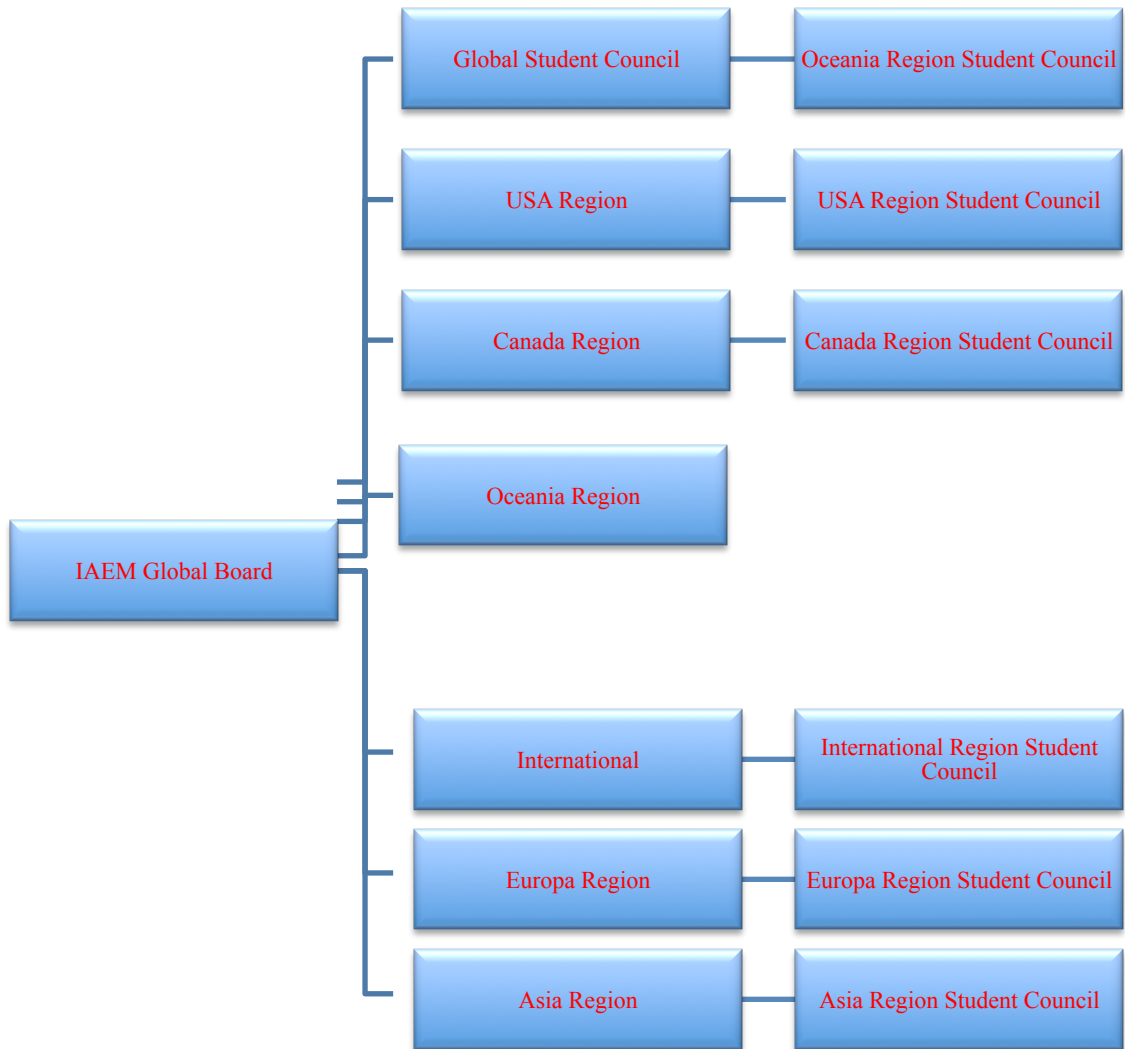
Special Projects Committee

Is a committee that is responsible for assisting the Board in developing specific projects to advance the services of the GSC. It comprises members who are allocated to specific projects. These members report to a Chairperson, who reports monthly to the Board on the progress of the programs.

Terms of Office and Election Dates (by months) – GSC and Student Regions

	GSC	U.S. Student Region	Canada Student Region	Oceania Student Region
Term of Office	March-March	IAEM Annual Conference-Conference (generally Nov.-Nov.)	Nov.-Nov.	Dec.-Dec.
Election Period	Jan.-Feb.	Sept.-Oct	Oct.	Oct.-Nov.

Figure 2: IAEM Organisational Structure



Online Resources

Additional online resources available at:

IAEM Website -> Student Tab -> Council Resources

Web address:

[http://www.iaem.com/page.cfm?p=council/student/resources
&lvl=2](http://www.iaem.com/page.cfm?p=council/student/resources&lvl=2)

- GSC - Terms of Reference
- Special Projects Committee – Terms of Reference
- GSC Board Minutes
- 2010 Emergency Management Student Survey Results
- 2010 Emergency Management Student Survey Presentation

Student Universities

Adelphi University
Adler School
Alabama Agricultural & Mechanical University
Algonquin College
American Military University
America Bangladesh University
American Public University
Anderson University
Andrews University
Anna Maria College
Arkansas State University
Arkansas Technical University
Athabasca University
ATU
Ball State University
Barry University
Baton Rouge Community College
Bergische Universität Wuppertal
Boston University
Brandon University
Brigham Young University
Caella University
California State University Dominguez Hills
California State University, Long Beach
California University of Pennsylvania
Cape Breton University
Capella University
Carleton University
Central Georgia Technical College
Central Michigan University
Chabot
Charles Sturt University, NSW, Australia
Chicago School of Professional Psychology
Clackamas Community College
Clemson University
Cleveland State University
CMSU and GWU
Coastal Carolina University
Coastline Community College
College of Southern Nevada
Colorado Technical University
Columbia Southern University
Columbia University, Teachers College
Community College of Rhode Island
Coventry University
CSULB
CUNY John Jay
Delaware county community college
DeVry University
DISS Qatar
Drexel University
Dublin City University
Eastern Kentucky University
Eastern Mennonite University
Eastern Michigan University
Eastern New Mexico University
Edmonds Community College
Embry-Riddle Aeronautical University
Empire State University of New York
EUROINNOVA FORMACION
Everest University
Fairleigh Dickinson University
Flathead Valley Community College
Florida State University
Forsyth Technical Community College
Frederick Community College
George Brown College
George Mason University
George Washington University
Georgetown University
Georgia State University
Grand Canyon University
Granite State College
Grantham University
Harper College
Harvard University
Hawaii Pacific University
Long Island University
Homeland security online & Illinois emergency management
Howard University
Idaho State University
Indiana University Purdue University - Indianapolis

Indiana University of Pennsylvania
Ivy Tech Community College
Jackson State University
Jacksonville State University
Jacksonville State University Alabama
Jefferson County Emergency Management Agency
John Jay College
John Jay College City University of New York
John Jay College/CUNY
John Jay School of Criminal Justice
Johns Hopkins University
Justice Institute of British Columbia, Royal Roads University
Kagawa University
Kaplan University
King Abdulaziz University
Kumamoto University
L.I.U.
Lakeland Community College
London School of Hygiene & Tropical Medicine
Lone Star College
Long Island University at Riverhead
Louisiana State University
Madison EMS / Philadelphia University
Massachusetts Maritime Academy
Massey University
MCNY
Mercyhurst College
Metropolitan College of New York
Metropolitan State University
Millersville University
Millersville University of Pennsylvania
Monmouth University
Montgomery College
Nagasaki University
National Chiayi University
National Labor College
National University
Naval postgraduate school
Naval War College
Navarro College
New Jersey City University
New York Medical College
North Central University
North Central University and Trident University International
North Dakota State University
Northcentral University
Northern Arizona University
Northern Illinois University
Northern Virginia Community College
Nova Southeastern University College of Osteopathic Medicine
NSU
Ohio Christian University
Oklahoma City Community College
Oklahoma State University
Ontario Emergency Management
Owens Community College
Park University
Pennsylvania State University
Pepperdine University
Philadelphia University
Pierce College
Portland Community College
Portland State University
Quinnipiac University School of Law
Regis University
Robert Morris University
Royal Roads University
Ryerson University
Saint Louis University
Sam Houston State University
San Diego State University
San Jose State University
Savannah State University
Sheridan College
Siena Heights University
Sierra College
Simon Fraser University/JIBC
Southern New Hampshire University
St Louis University
St Petersburg College
St. Louis University
St. Petersburg College
State University of New York at Canton
State University of New York Plattsburgh
State University of New York, Empire State College
SUNY Canton
SUNY Empire State College
Syracuse University
Texas A&M University
Texas Instruments
Texas Instruments
The Art Institute of York - Pennsylvania
The Bush School at Texas A&M University

The Evergreen State College
The Florida State University
The George Washington University
The Pennsylvania State University
The University of Akron
The University of Chicago
The University of South Florida - Dept of
Public Health
The University of TN at Chattanooga
Thomas Edison State College
Towson University
Trevecca Nazarene University
Trident University
Triton Community College
Troy University
Tufts University
TUI University
Tulane University
UBC
UC Berkeley Extension - San Francisco
UCLA, Center for Prehospital Care
UMUC
UNCC
Universidad Antonio Jose Camacho
University Nevada Las Vegas
University of Akron
University of Alaska - Anchorage
University of Alaska Fairbanks
University of Bonn, Germany
University of Bristol
University of Central Florida
University of Central Missouri
University of Chicago
University of Colorado
University of Delaware
University of Denver
University of Hawaii West Oahu
University of Houston
University of Iceland
University of Kentucky College of
Communication & Information
University of La Verne
University of Maryland
University of Maryland-Baltimore County
University of Miami
University of Michigan
University of Nebraska at Omaha
University of Nevada, Las Vegas
University of Nevada, Reno
University of New Haven
University of North Alabama
University of North Carolina at Chapel Hill
University of North Carolina at Pembroke
University of North Carolina at
Wilmington
University of North Carolina Charlotte
University of North Florida
University of North Texas
University of Oregon
University of Phoenix
University of Pittsburgh GSPH
University of Portsmouth
University of Rhode Island
University of Richmond
University of Saskatchewan
University of South Carolina
University of South Dakota
University of South Florida
University of Southern California
University of Southern Mississippi
University of Texas Health Sciences Center
at Houston
University of Texas, San Antonio
University of the District of Columbia
University of Utah
University of Victoria
University of Washington
Upper Iowa University
USAF Air Command & Staff College
Utah Valley University
Valdosta State University
Victoria University of Wellington
Virginia Commonwealth University
Virginia Tech
Walden University
Washington College
West Texas A&M University
West Valley College
Western Carolina University
Western Illinois University
Western Washington University
Wilmington University
Wintec
Wright State University
WTAMU
York University

[Intentionally left blank]



The International Association of Emergency Managers

Global Student Council

201 Park Washington Court,

Falls Church, VA 22046-4527, USA

www.iaem.com